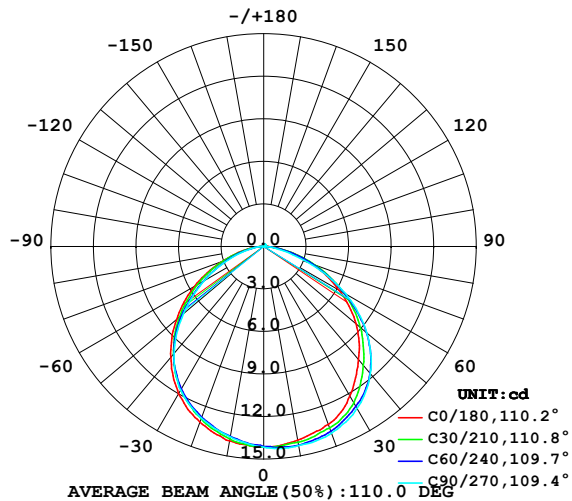


LUMINAIRE PHOTOMETRIC TEST REPORT

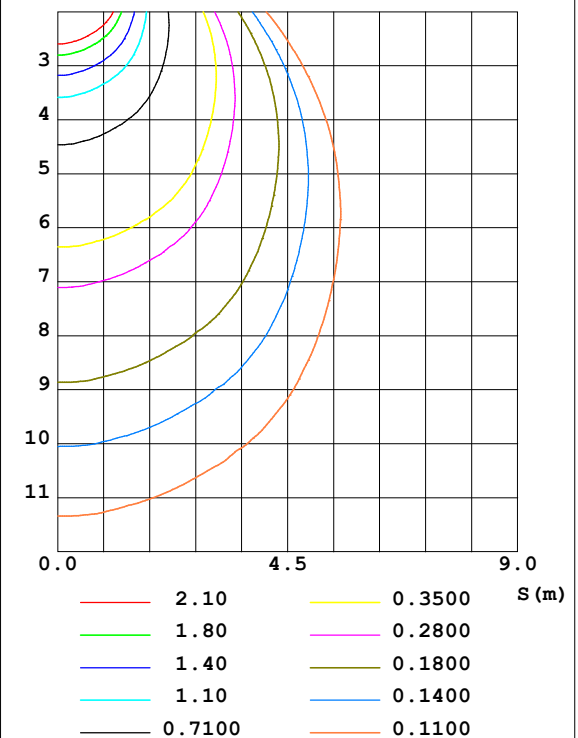
Test:U:24.00V I:0.1683A P:4.039W PF:1.000 Lamp Flux:39.8854x1 lm		
NAME: SP01-24V-5050-60-RGBW-2700K-80-B	TYPE: 硅胶	WEIGHT:
DIM.: 15mm*7mm	SPEC.:	SERIAL No.:20221224
MFR.: OLYMPIA	SUR.:1*0.0015	PROTECTION ANGLE:

DATA OF LAMP		PHOTOMETRIC DATA				Eff: 9.87 lm/W
MODEL	5050	I _{max} (cd)	14.30	S/MH (C0/180)	1.27	
NOMINAL POWER (W)	17	LOR (%)	100.0	S/MH (C90/270)	1.37	
RATED VOLTAGE (V)	24	TOTAL FLUX (lm)	39.885	η UP, DN (C0-180)	0.7, 52.5	
NOMINAL FLUX (lm)	39.8854	CIE CLASS	DIRECT	η UP, DN (C180-360)	0.5, 46.3	
LAMPS INSIDE	1	η up (%)	1.2	CIBSE SHR NOM	1.25	
TEST VOLTAGE (V)	24.0	η down (%)	98.8	CIBSE SHR MAX	1.35	

LUMINOUS INTENSITY DISTRIBUTION DIAGRAM



C0 PLANE ISOLUX DIAGRAM (UNIT:lx)



C Range: 0 - 360DEG
C Interval: 30.0DEG
Test Speed: HIGH
Temperature: 25.3DEG
Operators: WFW
Test Date: 2022-12-15

γ Range: 0 - 180DEG
γ Interval: 1.0DEG
Test System: EVERFINE GO-2000B_V1 SYSTEM V2.0.269
Humidity: 65.0%
Test Distance: 10.800m [K=1.0000]
Remarks:

ZONAL FLUX DIAGRAM
AND LUMINANCE LIMITATION CURVES

ZONAL FLUX DIAGRAM:

γ	C0	C45	C90	C135	C180	C225	C270	C315	γ	Φ zone	Φ total	%lum, lamp
10	13.88	14.13	14.25	14.15	13.92	13.69	13.64	13.59	0- 10	1.338	1.338	3.35,3.35
20	13.37	13.75	14.01	13.79	13.19	12.86	12.88	12.85	10- 20	3.858	5.196	13,13
30	12.16	12.87	13.18	12.86	12.01	11.64	11.70	11.77	20- 30	5.933	11.13	27.9,27.9
40	10.42	11.31	11.70	11.22	10.20	9.886	9.843	10.07	30- 40	7.195	18.32	45.9,45.9
50	8.514	9.195	9.493	9.087	8.038	7.663	7.413	7.967	40- 50	7.378	25.70	64.4,64.4
60	6.111	6.531	6.673	6.358	5.642	5.159	4.864	5.492	50- 60	6.405	32.11	80.5,80.5
70	3.673	3.768	3.356	3.602	3.121	2.839	2.481	3.130	60- 70	4.505	36.61	91.8,91.8
80	1.457	1.399	0.9476	1.292	1.148	1.015	0.8044	1.163	70- 80	2.281	38.89	97.5,97.5
90	0.1388	0.0659	0.0485	0.0659	0	0.0209	0.0210	0.0349	80- 90	0.5258	39.42	98.8,98.8
100	0.0624	0.0589	0.0693	0.0519	0.0069	0.0104	0.0139	0	90-100	0.0374	39.46	98.9,98.9
110	0.0623	0.0727	0.0831	0.0797	0.0415	0.0243	0.0139	0.0035	100-110	0.0429	39.50	99,99
120	0.0693	0.0900	0.1039	0.0935	0.0555	0.0484	0.0762	0.0416	110-120	0.0588	39.56	99.2,99.2
130	0.0693	0.0900	0.1247	0.1004	0.0833	0.0797	0.0762	0.0831	120-130	0.0699	39.63	99.4,99.4
140	0.0762	0.1074	0.1247	0.1108	0.1177	0.1004	0.0831	0.0970	130-140	0.0747	39.70	99.5,99.5
150	0.0900	0.1143	0.1593	0.1212	0.1386	0.1142	0.0831	0.1039	140-150	0.0682	39.77	99.7,99.7
160	0.1315	0.1385	0.1732	0.1420	0.1593	0.1385	0.0900	0.1213	150-160	0.0579	39.83	99.9,99.9
170	0.1592	0.1765	0.1801	0.1696	0.1870	0.1524	0.1315	0.1420	160-170	0.0413	39.87	100,100
180	0.1801	0.1905	0.1801	0.1801	0.1870	0.1939	0.1731	0.1766	170-180	0.0161	39.89	100,100
DEG	LUMINOUS INTENSITY:cd									UNIT:lm		



LUMINANCE cd/(m2)		
G (DEG)	C0/180	C90/270
85	68	32
80	84	55
75	97	73
70	107	98
65	116	119
60	122	133
55	128	142
50	132	148
45	135	151

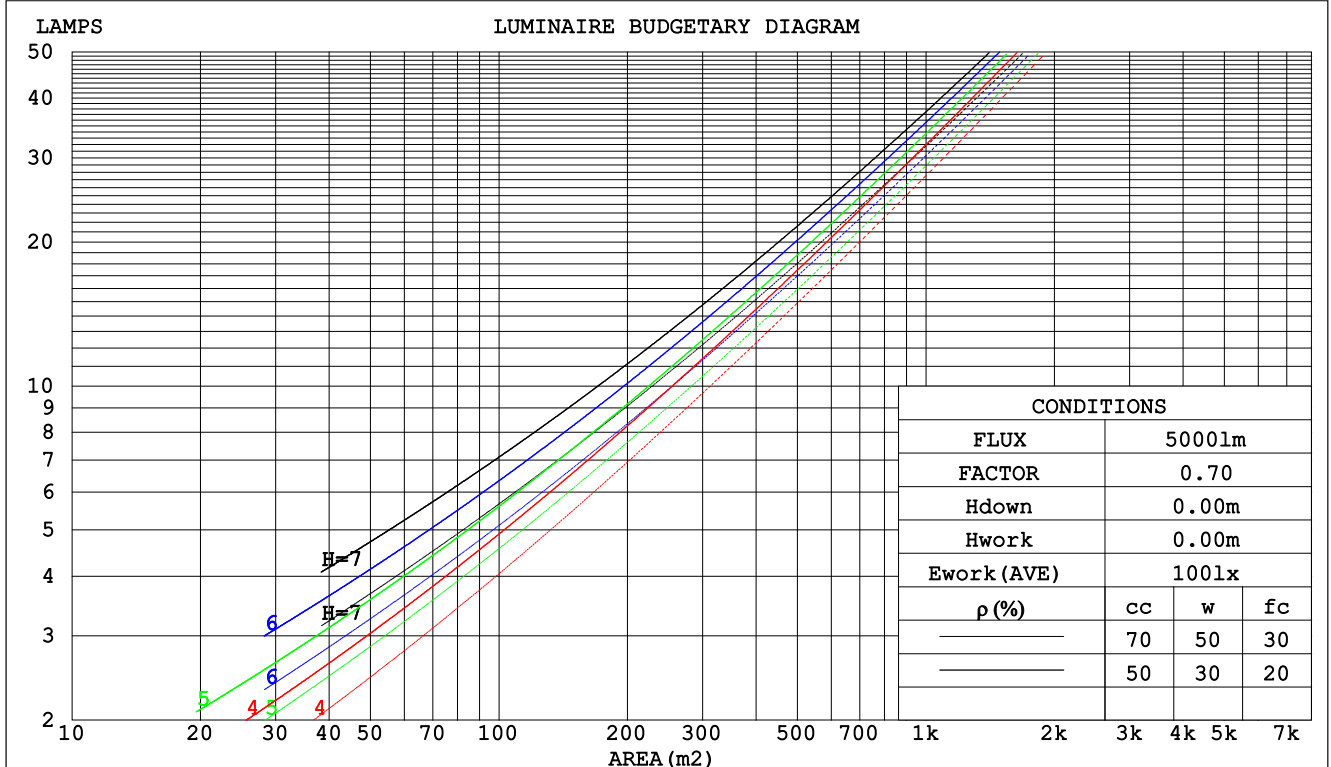
C Range: 0 - 360DEG
C Interval: 30.0DEG
Test Speed: HIGH
Temperature:25.3DEG
Operators:WFW
Test Date:2022-12-15

γ Range: 0 - 180DEG
 γ Interval: 1.0DEG
Test System:EVERFINE GO-2000B_V1 SYSTEM V2.0.269
Humidity:65.0%
Test Distance:10.800m [K=1.0000]
Remarks:

CU AND LUMINAIRE BUDGETARY ESTIMATE DIAGRAM

Test:U:24.00V I:0.1683A P:4.039W PF:1.000 Lamp Flux:39.8854x1 lm		
NAME: SP01-24V-5050-60-RGBW-2700K-80-B	TYPE: 硅胶	WEIGHT:
DIM.: 15mm*7mm	SPEC.:	SERIAL No.:20221224
MFR.: OLYMPIA	SUR.:1*0.0015	PROTECTION ANGLE:

ρ_{cc}	80%			70%			50%			30%			10%			0
ρ_w	50%	30%	10%	50%	30%	10%	50%	30%	10%	50%	30%	10%	50%	30%	10%	0
ρ_{fc}	20%			20%			20%			20%			20%			0
RCR	Coefficients of Utilization(CU)															
0.0	1.19	1.19	1.19	1.16	1.16	1.16	1.10	1.10	1.10	1.06	1.06	1.06	1.01	1.01	1.01	.99
1.0	1.04	1.00	.97	1.02	.98	.95	.98	.94	.92	.93	.91	.89	.90	.88	.86	.84
2.0	.91	.85	.79	.89	.83	.78	.86	.80	.76	.82	.78	.74	.79	.75	.72	.70
3.0	.80	.72	.66	.79	.71	.65	.76	.69	.64	.73	.67	.63	.70	.65	.62	.59
4.0	.71	.63	.56	.70	.62	.56	.67	.60	.55	.65	.59	.54	.62	.57	.53	.51
5.0	.64	.55	.48	.63	.54	.48	.60	.53	.47	.58	.52	.47	.56	.51	.46	.44
6.0	.57	.49	.42	.56	.48	.42	.54	.47	.41	.53	.46	.41	.51	.45	.41	.38
7.0	.52	.43	.37	.51	.43	.37	.49	.42	.37	.48	.41	.36	.46	.41	.36	.34
8.0	.47	.39	.33	.47	.39	.33	.45	.38	.33	.44	.37	.33	.43	.37	.32	.30
9.0	.44	.35	.30	.43	.35	.30	.42	.35	.30	.40	.34	.29	.39	.33	.29	.27
10.0	.40	.32	.27	.40	.32	.27	.38	.32	.27	.37	.31	.27	.37	.31	.26	.25



C Range: 0 - 360DEG
C Interval: 30.0DEG
Test Speed: HIGH
Temperature:25.3DEG
Operators:WFW
Test Date:2022-12-15

γ Range: 0 - 180DEG
 γ Interval: 1.0DEG
Test System:EVERFINE GO-2000B_V1 SYSTEM V2.0.269
Humidity:65.0%
Test Distance:10.800m [K=1.0000]
Remarks:

WEC AND CCEC

Test:U:24.00V I:0.1683A P:4.039W PF:1.000 Lamp Flux:39.8854x1 lm					
NAME: SP01-24V-5050-60-RGBW-2700K-80-B			TYPE: 硅胶		WEIGHT:
DIM.: 15mm*7mm			SPEC.:		SERIAL No.:20221224
MFR.: OLYMPIA			SUR.:1*0.0015		PROTECTION ANGLE:

pcc	80%			70%			50%			30%			10%			0
pw	50%	30%	10%	50%	30%	10%	50%	30%	10%	50%	30%	10%	50%	30%	10%	0
pfc	20%			20%			20%			20%			20%			0
RCR	RCR:Room Cavity Ratio						Wall Exitance Coefficients(WEC)									
0.0																
1.0	.295	.168	.053	.288	.164	.052	.274	.157	.050	.261	.151	.048	.250	.145	.047	
2.0	.281	.154	.047	.275	.151	.047	.262	.146	.045	.251	.141	.044	.241	.136	.043	
3.0	.262	.139	.042	.256	.137	.041	.245	.133	.040	.235	.129	.040	.226	.125	.039	
4.0	.243	.126	.037	.238	.125	.037	.228	.121	.036	.219	.118	.036	.211	.115	.035	
5.0	.226	.115	.033	.221	.113	.033	.212	.111	.033	.205	.108	.032	.197	.105	.032	
6.0	.210	.105	.030	.206	.104	.030	.198	.102	.030	.191	.099	.029	.184	.097	.029	
7.0	.196	.097	.027	.192	.096	.027	.185	.094	.027	.179	.092	.027	.173	.090	.026	
8.0	.183	.090	.025	.180	.089	.025	.174	.087	.025	.168	.085	.025	.163	.083	.024	
9.0	.172	.083	.023	.169	.082	.023	.163	.081	.023	.158	.079	.023	.153	.078	.023	
10.0	.162	.078	.022	.159	.077	.021	.154	.076	.021	.149	.074	.021	.145	.073	.021	

pcc	80%			70%			50%			30%			10%			0
pw	50%	30%	10%	50%	30%	10%	50%	30%	10%	50%	30%	10%	50%	30%	10%	0
pfc	20%			20%			20%			20%			20%			0
RCR	RCR:Room Cavity Ratio						Ceiling Cavity Exitance Coefficients (CCEC)									
0.0	.199	.199	.199	.170	.170	.170	.116	.116	.116	.067	.067	.067	.021	.021	.021	
1.0	.188	.165	.145	.161	.142	.124	.110	.098	.086	.063	.056	.050	.020	.018	.016	
2.0	.180	.141	.108	.154	.121	.094	.106	.084	.065	.061	.049	.038	.020	.016	.012	
3.0	.172	.123	.085	.147	.106	.073	.101	.074	.051	.058	.043	.030	.019	.014	.010	
4.0	.164	.110	.068	.141	.095	.059	.097	.066	.042	.056	.039	.025	.018	.013	.008	
5.0	.157	.100	.057	.135	.086	.050	.093	.060	.035	.054	.035	.021	.017	.012	.007	
6.0	.150	.091	.049	.129	.079	.043	.089	.055	.030	.052	.033	.018	.017	.011	.006	
7.0	.143	.084	.043	.123	.073	.037	.085	.051	.026	.050	.030	.016	.016	.010	.005	
8.0	.137	.079	.038	.118	.068	.033	.082	.048	.024	.048	.028	.014	.015	.009	.005	
9.0	.131	.074	.035	.113	.064	.030	.078	.045	.021	.046	.027	.013	.015	.009	.004	
10.0	.126	.069	.032	.108	.060	.028	.075	.042	.020	.044	.025	.012	.014	.008	.004	

C Range: 0 - 360DEG
C Interval: 30.0DEG
Test Speed: HIGH
Temperature:25.3DEG
Operators:WFW
Test Date:2022-12-15

γ Range: 0 - 180DEG
γ Interval: 1.0DEG
Test System:EVERFINE GO-2000B_V1 SYSTEM V2.0.269
Humidity:65.0%
Test Distance:10.800m [K=1.0000]
Remarks:

Uncorrected UGR Table

Test:U:24.00V I:0.1683A P:4.039W PF:1.000 Lamp Flux:39.8854x1 lm											
NAME: SP01-24V-5050-60-RGBW-2700K-80-B						TYPE:硅胶			WEIGHT:		
DIM.: 15mm*7mm						SPEC.:			SERIAL No.:20221224		
MFR.: OLYMPIA						SUR.:1*0.0015			PROTECTION ANGLE:		
ceiling/cavity	0.7	0.7	0.5	0.5	0.3	0.7	0.7	0.5	0.5	0.3	
walls	0.5	0.3	0.5	0.3	0.3	0.5	0.3	0.5	0.3	0.3	
working plane	0.2	0.2	0.2	0.2	0.2	0.2	0.2	0.2	0.2	0.2	
Room dimensions	Viewed crosswise					Viewed endwise					
x = 2H y = 2H	6.0	7.5	6.3	7.7	7.9	6.3	7.8	6.6	8.0	8.2	
	3H	7.4	8.7	7.7	9.0	9.2	7.5	8.8	7.8	9.1	9.4
	4H	7.9	9.2	8.2	9.4	9.7	7.8	9.1	8.1	9.4	9.6
	6H	8.2	9.4	8.6	9.7	10.0	7.9	9.2	8.3	9.4	9.7
	8H	8.3	9.5	8.7	9.8	10.1	7.9	9.1	8.3	9.4	9.7
	12H	8.3	9.5	8.7	9.8	10.1	7.9	9.1	8.3	9.4	9.7
4H	2H	6.6	7.9	6.9	8.2	8.4	6.8	8.1	7.2	8.4	8.7
	3H	8.1	9.3	8.5	9.6	9.9	8.2	9.3	8.6	9.6	10.0
	4H	8.8	9.8	9.2	10.1	10.5	8.6	9.7	9.0	10.0	10.4
	6H	9.2	10.1	9.6	10.5	10.9	8.9	9.8	9.3	10.2	10.5
	8H	9.4	10.2	9.8	10.6	11.0	8.9	9.8	9.4	10.2	10.6
	12H	9.4	10.2	9.9	10.6	11.0	8.9	9.7	9.4	10.1	10.5
8H	4H	9.0	9.8	9.4	10.2	10.6	8.9	9.7	9.3	10.1	10.5
	6H	9.6	10.3	10.0	10.7	11.1	9.2	9.9	9.7	10.4	10.8
	8H	9.8	10.4	10.2	10.8	11.3	9.3	10.0	9.8	10.4	10.9
	12H	9.9	10.4	10.4	10.9	11.4	9.4	9.9	9.9	10.4	10.9
12H	4H	9.0	9.7	9.4	10.2	10.6	8.9	9.6	9.3	10.0	10.5
	6H	9.6	10.2	10.1	10.6	11.1	9.3	9.9	9.7	10.3	10.8
	8H	9.8	10.3	10.3	10.8	11.3	9.4	9.9	9.9	10.4	10.9
Variations with the observer position at spacings:											
S = 1.0H	+ 0.2 / - 0.2					+ 0.2 / - 0.3					
1.5H	+ 0.2 / - 0.4					+ 0.2 / - 0.4					
2.0H	+ 0.2 / - 0.4					+ 0.3 / - 0.4					

CIE Pub.117 Corrected 39.89 lm Total Lamp Luminous Flux. (8log(F/F0) = -11.2)

C Range: 0 - 360DEG
C Interval: 30.0DEG
Test Speed: HIGH
Temperature:25.3DEG
Operators:WFW
Test Date:2022-12-15

γ Range: 0 - 180DEG
γ Interval: 1.0DEG
Test System:EVERFINE GO-2000B_V1 SYSTEM V2.0.269
Humidity:65.0%
Test Distance:10.800m [K=1.0000]
Remarks:

UTILIZATION FACTORS TABLE

Test:U:24.00V I:0.1683A P:4.039W PF:1.000 Lamp Flux:39.8854x1 lm		
NAME: SP01-24V-5050-60-RGBW-2700K-80-B	TYPE: 硅胶	WEIGHT:
DIM.: 15mm*7mm	SPEC.:	SERIAL No.:20221224
MFR.: OLYMPIA	SUR.:1*0.0015	PROTECTION ANGLE:

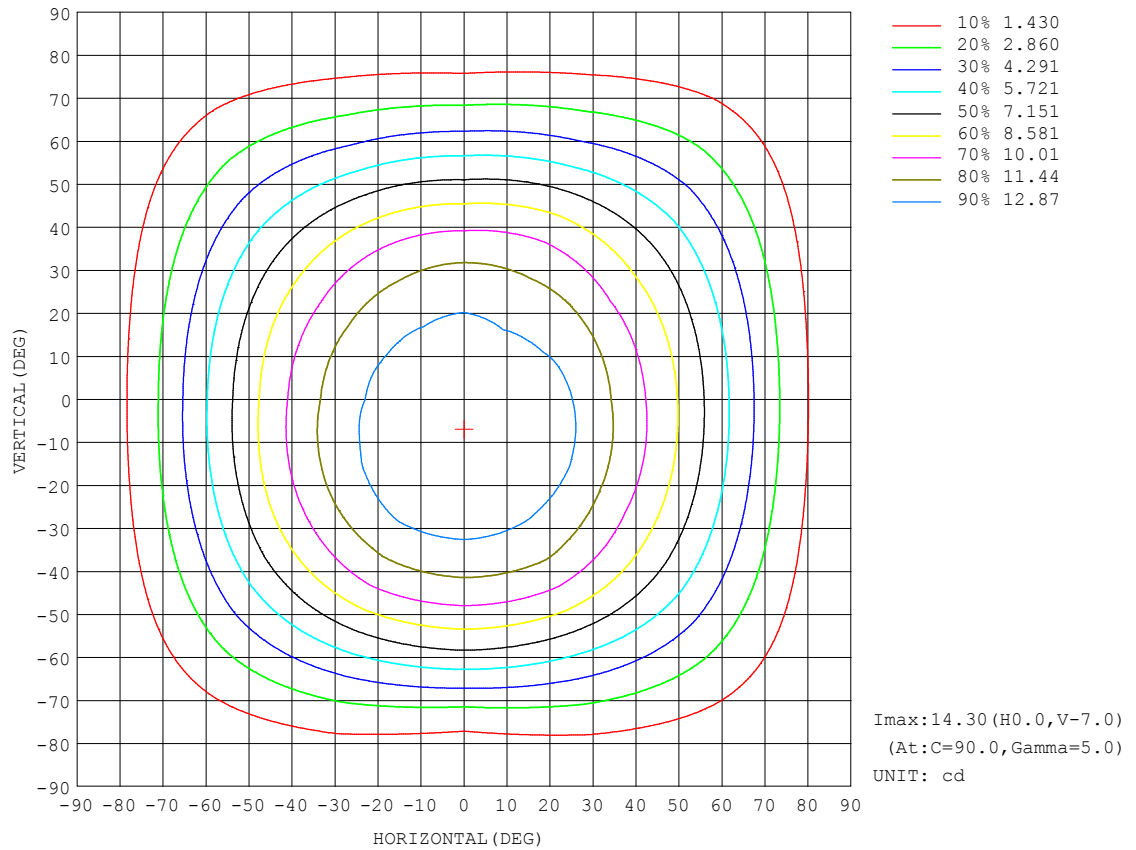
REFLECTANCE										
Ceiling	0.8	0.8	0.8	0.7	0.7	0.7	0.5	0.5	0.5	0
Walls	0.7	0.5	0.3	0.7	0.5	0.3	0.7	0.5	0.3	0
Working plane	0.2	0.2	0.2	0.2	0.2	0.2	0.2	0.2	0.2	0
ROOM INDEX	UTILIZATION FACTORS (PERCENT) $k(RI) \times RCR = 5$									
$k = 0.60$	58	47	40	57	46	40	56	46	39	33
0.80	68	57	50	67	56	49	65	56	49	42
1.00	77	66	59	76	65	59	73	67	58	51
1.25	84	74	67	82	73	66	80	71	65	58
1.50	89	79	72	87	78	72	84	76	71	63
2.00	96	87	81	94	86	80	90	84	79	71
2.50	99	92	86	97	90	85	93	88	83	75
3.00	103	96	91	100	94	90	96	91	87	79
4.00	107	101	97	104	99	95	100	96	92	83
5.00	109	104	100	106	102	99	102	98	95	86
ROOM INDEX	UF(total)									Direct
According to DIN EN 13032-2 2004			Suspended					SHRNM = 1.25		

C Range: 0 - 360DEG
C Interval: 30.0DEG
Test Speed: HIGH
Temperature:25.3DEG
Operators:WFW
Test Date:2022-12-15

γ Range: 0 - 180DEG
 γ Interval: 1.0DEG
Test System:EVERFINE GO-2000B_V1 SYSTEM V2.0.269
Humidity:65.0%
Test Distance:10.800m [K=1.0000]
Remarks:

ISOCANDELA DIAGRAM

Test:U:24.00V I:0.1683A P:4.039W PF:1.000 Lamp Flux:39.8854x1 lm		
NAME: SP01-24V-5050-60-RGBW-2700K-80-B	TYPE: 硅胶	WEIGHT:
DIM.: 15mm*7mm	SPEC.:	SERIAL No.:20221224
MFR.: OLYMPIA	SUR.:1*0.0015	PROTECTION ANGLE:

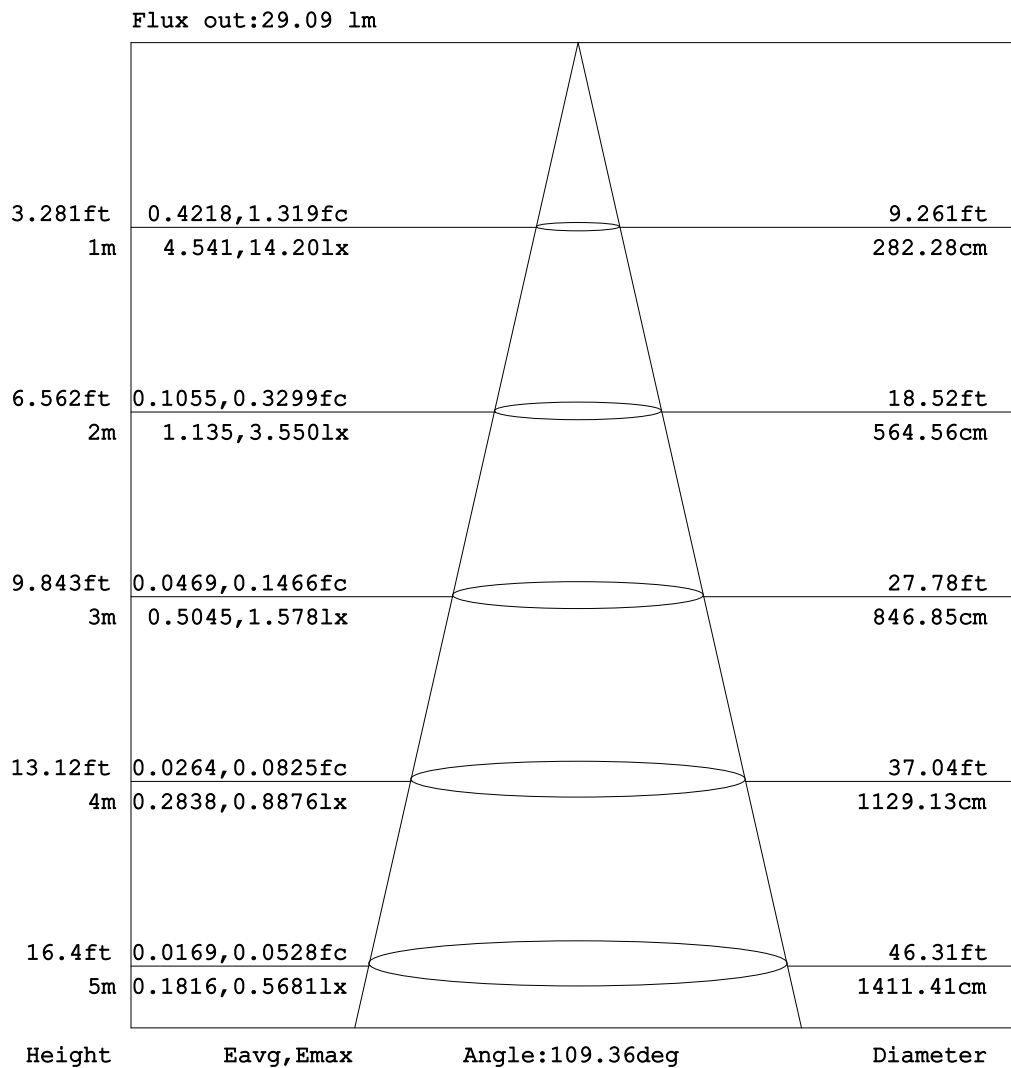


C Range: 0 - 360DEG
C Interval: 30.0DEG
Test Speed: HIGH
Temperature:25.3DEG
Operators:WFW
Test Date:2022-12-15

γ Range: 0 - 180DEG
 γ Interval: 1.0DEG
Test System:EVERFINE GO-2000B_V1 SYSTEM V2.0.269
Humidity:65.0%
Test Distance:10.800m [K=1.0000]
Remarks:

AAI Figure

Test:U:24.00V I:0.1683A P:4.039W PF:1.000 Lamp Flux:39.8854x1 lm		
NAME: SP01-24V-5050-60-RGBW-2700K-80-B	TYPE: 硅胶	WEIGHT:
DIM.: 15mm*7mm	SPEC.:	SERIAL No.:20221224
MFR.: OLYMPIA	SUR.:1*0.0015	PROTECTION ANGLE:



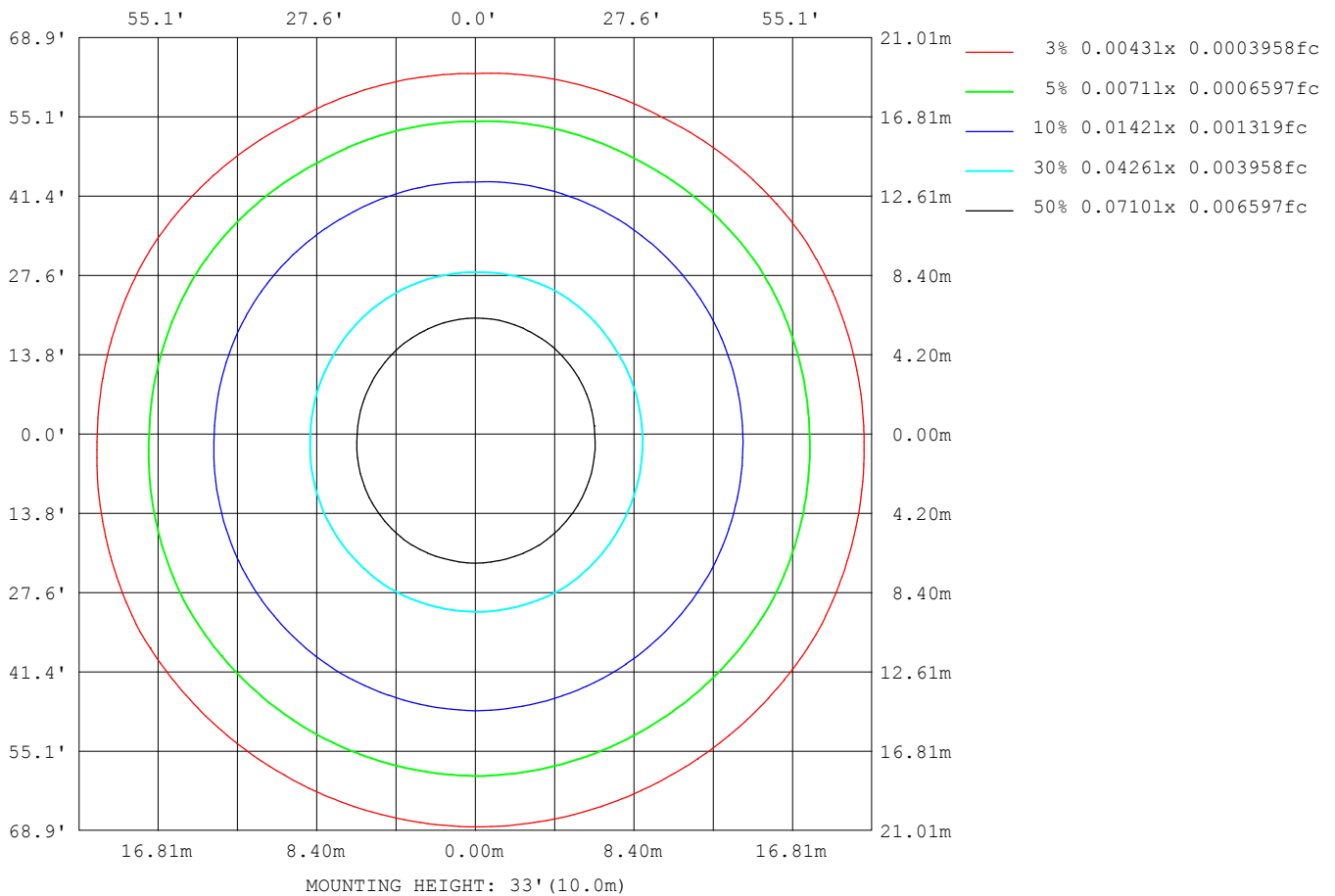
Note: The Curves indicate the illuminated area and the average illumination when the luminaire is at different distance.

C Range: 0 - 360DEG
C Interval: 30.0DEG
Test Speed: HIGH
Temperature: 25.3DEG
Operators: WFW
Test Date: 2022-12-15

γ Range: 0 - 180DEG
γ Interval: 1.0DEG
Test System: EVERFINE GO-2000B_V1 SYSTEM V2.0.269
Humidity: 65.0%
Test Distance: 10.800m [K=1.0000]
Remarks:

ISOLUX DIAGRAM

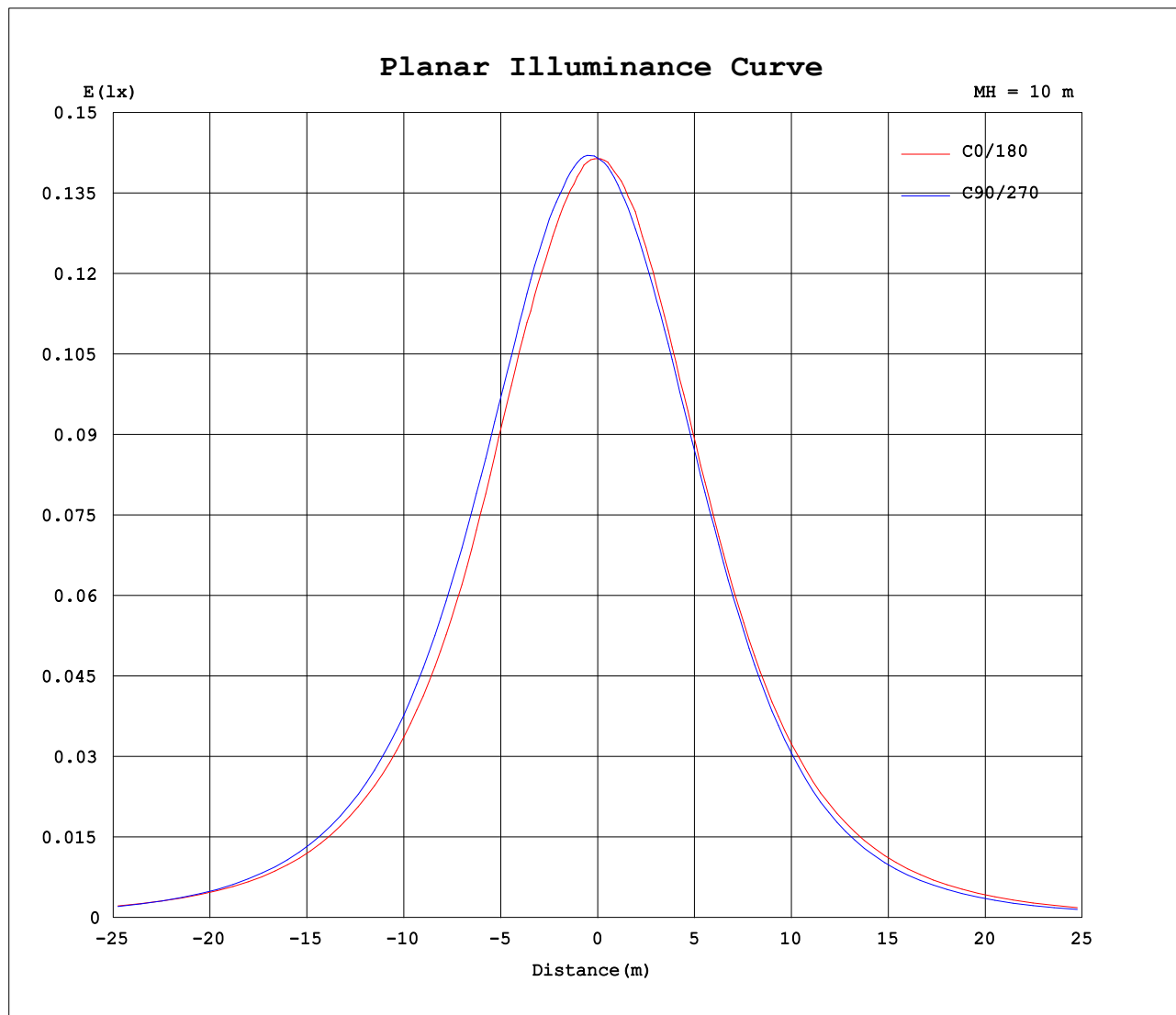
Test:U:24.00V I:0.1683A P:4.039W PF:1.000 Lamp Flux:39.8854x1 lm		
NAME: SP01-24V-5050-60-RGBW-2700K-80-B	TYPE: 硅胶	WEIGHT:
DIM.: 15mm*7mm	SPEC.:	SERIAL No.:20221224
MFR.: OLYMPIA	SUR.:1*0.0015	PROTECTION ANGLE:



C Range: 0 - 360DEG
C Interval: 30.0DEG
Test Speed: HIGH
Temperature:25.3DEG
Operators:WFW
Test Date:2022-12-15

γ Range: 0 - 180DEG
 γ Interval: 1.0DEG
Test System:EVERFINE GO-2000B_V1 SYSTEM V2.0.269
Humidity:65.0%
Test Distance:10.800m [K=1.0000]
Remarks:

Planar Illuminance Curve



C Range: 0 - 360DEG
C Interval: 30.0DEG
Test Speed: HIGH
Temperature: 25.3DEG
Operators: WFW
Test Date: 2022-12-15

γ Range: 0 - 180DEG
 γ Interval: 1.0DEG
Test System: EVERFINE GO-2000B_V1 SYSTEM V2.0.269
Humidity: 65.0%
Test Distance: 10.800m [K=1.0000]
Remarks:

LUMINOUS DISTRIBUTION INTENSITY DATA

Test:U:24.00V I:0.1683A P:4.039W PF:1.000 Lamp Flux:39.8854x1 lm		
NAME: SP01-24V-5050-60-RGBW-2700K-80-B	TYPE: 硅胶	WEIGHT:
DIM.: 15mm*7mm	SPEC.:	SERIAL No.:20221224
MFR.: OLYMPIA	SUR.:1*0.0015	PROTECTION ANGLE:

Table--1

UNIT: cd

C (DEG) γ (DEG)	0	30	60	90	120	150	180	210	240	270	300	330						
0	14.1	14.1	14.1	14.2	14.1	14.1	14.1	14.1	14.1	14.2	14.1	14.1						
5	14.1	14.1	14.2	14.3	14.2	14.1	14.1	14.0	13.9	13.9	13.8	14.0						
10	13.9	14.0	14.2	14.3	14.3	14.1	13.9	13.8	13.6	13.6	13.5	13.7						
15	13.6	13.9	14.1	14.2	14.2	13.9	13.6	13.4	13.2	13.3	13.1	13.3						
20	13.4	13.6	13.9	14.0	14.0	13.6	13.2	12.9	12.8	12.9	12.7	13.0						
25	12.9	13.3	13.5	13.7	13.6	13.1	12.7	12.4	12.3	12.3	12.2	12.5						
30	12.2	12.7	13.0	13.2	13.1	12.6	12.0	11.7	11.6	11.7	11.7	11.9						
35	11.3	11.9	12.4	12.5	12.4	11.9	11.1	10.9	10.8	10.9	11.0	11.0						
40	10.4	10.9	11.7	11.7	11.5	10.9	10.2	9.90	9.87	9.84	10.1	10.0						
45	9.53	9.94	10.7	10.7	10.6	9.87	9.17	8.90	8.79	8.69	9.06	9.12						
50	8.51	8.92	9.47	9.49	9.38	8.79	8.04	7.77	7.55	7.41	7.83	8.11						
55	7.36	7.76	8.04	8.14	7.97	7.50	6.86	6.57	6.21	6.14	6.49	7.00						
60	6.11	6.51	6.55	6.67	6.49	6.23	5.64	5.40	4.91	4.86	5.16	5.82						
65	4.89	5.20	5.09	5.04	4.98	4.92	4.38	4.20	3.70	3.62	3.92	4.63						
70	3.67	3.85	3.69	3.36	3.62	3.58	3.12	3.05	2.63	2.48	2.81	3.45						
75	2.51	2.59	2.44	1.90	2.35	2.33	2.05	2.02	1.71	1.54	1.83	2.32						
80	1.46	1.46	1.34	0.95	1.32	1.27	1.15	1.12	0.91	0.80	0.99	1.34						
85	0.59	0.53	0.47	0.28	0.49	0.48	0.39	0.42	0.30	0.29	0.33	0.53						
90	0.14	0.06	0.08	0.05	0.08	0.06	0.00	0.03	0.01	0.02	0.00	0.07						
95	0.06	0.06	0.06	0.06	0.05	0.06	0.01	0.01	0.01	0.01	0.00	0.01						
100	0.06	0.06	0.06	0.07	0.04	0.06	0.01	0.00	0.02	0.01	0.00	0.00						
105	0.06	0.08	0.06	0.08	0.08	0.08	0.02	0.00	0.04	0.01	0.00	0.01						
110	0.06	0.08	0.06	0.08	0.08	0.08	0.04	0.00	0.05	0.01	0.00	0.01						
115	0.07	0.10	0.07	0.10	0.08	0.09	0.05	0.01	0.06	0.01	0.06	0.01						
120	0.07	0.11	0.07	0.10	0.08	0.10	0.06	0.01	0.08	0.08	0.08	0.01						
125	0.07	0.11	0.07	0.10	0.08	0.12	0.07	0.01	0.08	0.08	0.08	0.02						
130	0.07	0.11	0.07	0.12	0.08	0.12	0.08	0.06	0.10	0.08	0.08	0.08						
135	0.08	0.13	0.07	0.12	0.08	0.13	0.10	0.08	0.11	0.08	0.10	0.08						
140	0.08	0.15	0.07	0.12	0.08	0.14	0.12	0.08	0.12	0.08	0.11	0.08						
145	0.08	0.15	0.08	0.15	0.08	0.15	0.13	0.08	0.12	0.08	0.12	0.08						
150	0.09	0.15	0.08	0.16	0.09	0.15	0.14	0.07	0.16	0.08	0.12	0.08						
155	0.10	0.17	0.09	0.16	0.11	0.17	0.15	0.08	0.16	0.08	0.15	0.09						
160	0.13	0.18	0.10	0.17	0.11	0.17	0.16	0.10	0.18	0.09	0.15	0.09						
165	0.13	0.19	0.11	0.18	0.11	0.17	0.18	0.10	0.19	0.11	0.17	0.10						
170	0.16	0.19	0.16	0.18	0.15	0.19	0.19	0.12	0.19	0.13	0.17	0.11						
175	0.17	0.19	0.17	0.18	0.16	0.19	0.19	0.14	0.19	0.16	0.18	0.15						
180	0.18	0.19	0.19	0.18	0.17	0.19	0.19	0.19	0.19	0.17	0.18	0.17						

C Range: 0 - 360DEG
C Interval: 30.0DEG
Test Speed: HIGH
Temperature:25.3DEG
Operators:WFW
Test Date:2022-12-15

γ Range: 0 - 180DEG
γ Interval: 1.0DEG
Test System:EVERFINE GO-2000B_V1 SYSTEM V2.0.269
Humidity:65.0%
Test Distance:10.800m [K=1.0000]
Remarks:

Photometric Data Table [cd]

G/C	0.0	30.0	60.0	90.0	120.0	150.0	180.0	210.0	240.0	270.0
0.0	14.14	14.14	14.11	14.16	14.09	14.15	14.14	14.14	14.11	14.16
3.0	14.14	14.14	14.19	14.26	14.16	14.14	14.14	14.10	14.00	14.05
6.0	14.03	14.07	14.22	14.30	14.25	14.14	14.04	13.99	13.85	13.88
9.0	13.91	14.02	14.24	14.29	14.25	14.11	13.93	13.87	13.67	13.71
12.0	13.78	13.98	14.18	14.25	14.25	14.02	13.81	13.65	13.47	13.51
15.0	13.61	13.86	14.08	14.20	14.22	13.87	13.60	13.41	13.25	13.30
18.0	13.48	13.69	13.97	14.12	14.06	13.71	13.35	13.15	12.99	13.06
21.0	13.28	13.57	13.81	13.93	13.90	13.51	13.07	12.83	12.70	12.79
24.0	13.00	13.36	13.57	13.72	13.67	13.25	12.78	12.47	12.39	12.46
27.0	12.66	13.09	13.31	13.50	13.42	12.94	12.40	12.10	12.02	12.11
30.0	12.16	12.73	13.01	13.18	13.10	12.62	12.01	11.69	11.60	11.70
33.0	11.65	12.24	12.71	12.83	12.73	12.15	11.50	11.21	11.14	11.21
36.0	11.13	11.70	12.30	12.39	12.26	11.67	10.97	10.69	10.65	10.69
39.0	10.59	11.13	11.85	11.89	11.72	11.12	10.39	10.11	10.10	10.04
42.0	10.06	10.57	11.28	11.34	11.14	10.53	9.791	9.490	9.451	9.387
45.0	9.525	9.944	10.67	10.68	10.56	9.868	9.175	8.901	8.786	8.687
48.0	8.929	9.334	9.962	10.01	9.879	9.230	8.488	8.216	8.059	7.904
51.0	8.300	8.690	9.221	9.237	9.118	8.517	7.803	7.538	7.290	7.150
54.0	7.600	8.004	8.356	8.440	8.252	7.748	7.097	6.824	6.473	6.381
57.0	6.873	7.263	7.448	7.574	7.358	7.014	6.376	6.117	5.690	5.612
60.0	6.111	6.508	6.555	6.673	6.485	6.231	5.642	5.404	4.914	4.864
63.0	5.391	5.739	5.669	5.662	5.586	5.414	4.907	4.698	4.180	4.116
66.0	4.650	4.922	4.803	4.707	4.713	4.638	4.139	3.977	3.474	3.375
69.0	3.909	4.132	3.958	3.695	3.888	3.848	3.363	3.271	2.830	2.710
72.0	3.196	3.350	3.175	2.705	3.092	3.059	2.650	2.634	2.235	2.100
75.0	2.510	2.588	2.441	1.896	2.351	2.325	2.048	2.017	1.709	1.539
78.0	1.859	1.903	1.762	1.259	1.699	1.661	1.501	1.470	1.210	1.061
81.0	1.256	1.238	1.138	0.8019	1.124	1.079	0.9884	0.9570	0.7810	0.6934
84.0	0.7362	0.6979	0.6183	0.3937	0.6321	0.6014	0.5247	0.5347	0.4073	0.3749
87.0	0.3407	0.2555	0.2368	0.1241	0.2644	0.2140	0.1446	0.2086	0.1170	0.1599
90.0	0.1388	0.0554	0.0765	0.0485	0.0765	0.0554	0	0.0349	0.0069	0.0210
93.0	0.0763	0.0554	0.0554	0.0554	0.0485	0.0554	0	0.0069	0.0139	0.0139
96.0	0.0692	0.0554	0.0554	0.0623	0.0485	0.0554	0	0.0001	0.0208	0.0139
99.0	0.0693	0.0623	0.0554	0.0624	0.0416	0.0623	0.0001	0	0.0208	0.0139
102.0	0.0623	0.0693	0.0554	0.0693	0.0416	0.0623	0.0139	0	0.0209	0.0139
105.0	0.0623	0.0762	0.0554	0.0762	0.0760	0.0830	0.0209	0	0.0416	0.0139
108.0	0.0623	0.0831	0.0623	0.0831	0.0762	0.0763	0.0277	0	0.0485	0.0139
111.0	0.0623	0.0901	0.0623	0.0832	0.0762	0.0900	0.0346	0.0206	0.0554	0.0139
114.0	0.0693	0.0970	0.0760	0.0970	0.0831	0.0900	0.0416	0.0139	0.0555	0.0139
117.0	0.0693	0.0970	0.0693	0.1039	0.0831	0.1039	0.0486	0.0139	0.0624	0.0413
120.0	0.0693	0.1108	0.0693	0.1039	0.0831	0.1039	0.0555	0.0139	0.0830	0.0762
123.0	0.0693	0.1108	0.0693	0.1039	0.0831	0.1039	0.0624	0.0139	0.0831	0.0762
126.0	0.0693	0.1108	0.0693	0.1109	0.0831	0.1177	0.0762	0.0139	0.0832	0.0762
129.0	0.0693	0.1108	0.0693	0.1247	0.0831	0.1177	0.0831	0.0691	0.0970	0.0762
132.0	0.0762	0.1109	0.0693	0.1247	0.0831	0.1177	0.0900	0.0761	0.0970	0.0831
135.0	0.0762	0.1317	0.0693	0.1247	0.0831	0.1316	0.0970	0.0762	0.1110	0.0831
138.0	0.0762	0.1386	0.0693	0.1247	0.0831	0.1385	0.0972	0.0762	0.1178	0.0831
141.0	0.0762	0.1524	0.0693	0.1248	0.0831	0.1385	0.1178	0.0762	0.1247	0.0831
144.0	0.0762	0.1524	0.0693	0.1592	0.0831	0.1524	0.1247	0.0762	0.1247	0.0831
147.0	0.0832	0.1524	0.0762	0.1524	0.0831	0.1524	0.1316	0.0693	0.1317	0.0831
150.0	0.0900	0.1524	0.0762	0.1593	0.0900	0.1524	0.1386	0.0693	0.1592	0.0831
153.0	0.0900	0.1524	0.0831	0.1593	0.1108	0.1524	0.1524	0.0762	0.1593	0.0831
156.0	0.0970	0.1731	0.0900	0.1593	0.1108	0.1731	0.1593	0.0831	0.1662	0.0831
159.0	0.1246	0.1869	0.0970	0.1731	0.1108	0.1731	0.1593	0.0969	0.1664	0.0900
162.0	0.1315	0.1939	0.1040	0.1801	0.1108	0.1731	0.1593	0.1038	0.1732	0.0970
165.0	0.1316	0.1870	0.1109	0.1801	0.1108	0.1731	0.1801	0.1039	0.1870	0.1108
168.0	0.1454	0.1939	0.1177	0.1801	0.1454	0.1801	0.1801	0.1177	0.1870	0.1177
171.0	0.1730	0.1939	0.1524	0.1801	0.1524	0.1870	0.1870	0.1246	0.1939	0.1385
174.0	0.1731	0.1939	0.1660	0.1801	0.1524	0.1870	0.1870	0.1316	0.1939	0.1524
177.0	0.1731	0.1939	0.1731	0.1801	0.1593	0.1870	0.1870	0.1524	0.1939	0.1662
180.0	0.1801	0.1939	0.1870	0.1801	0.1731	0.1870	0.1870	0.1939	0.1939	0.1731
G/C	300.0	330.0								
0.0	14.09	14.15								
3.0	13.94	14.03								
6.0	13.78	13.90								
9.0	13.61	13.72								
12.0	13.38	13.54								
15.0	13.14	13.33								
18.0	12.90	13.11								
21.0	12.67	12.89								
24.0	12.35	12.64								
27.0	12.01	12.29								
30.0	11.66	11.88								

C Range: 0 - 360DEG
 C Interval: 30.0DEG
 Test Speed: HIGH
 Temperature: 25.3DEG
 Operators: WFW
 Test Date: 2022-12-15

γ Range: 0 - 180DEG
 γ Interval: 1.0DEG
 Test System: EVERFINE GO-2000B_V1 SYSTEM V2.0.269
 Humidity: 65.0%
 Test Distance: 10.800m [K=1.0000]
 Remarks:

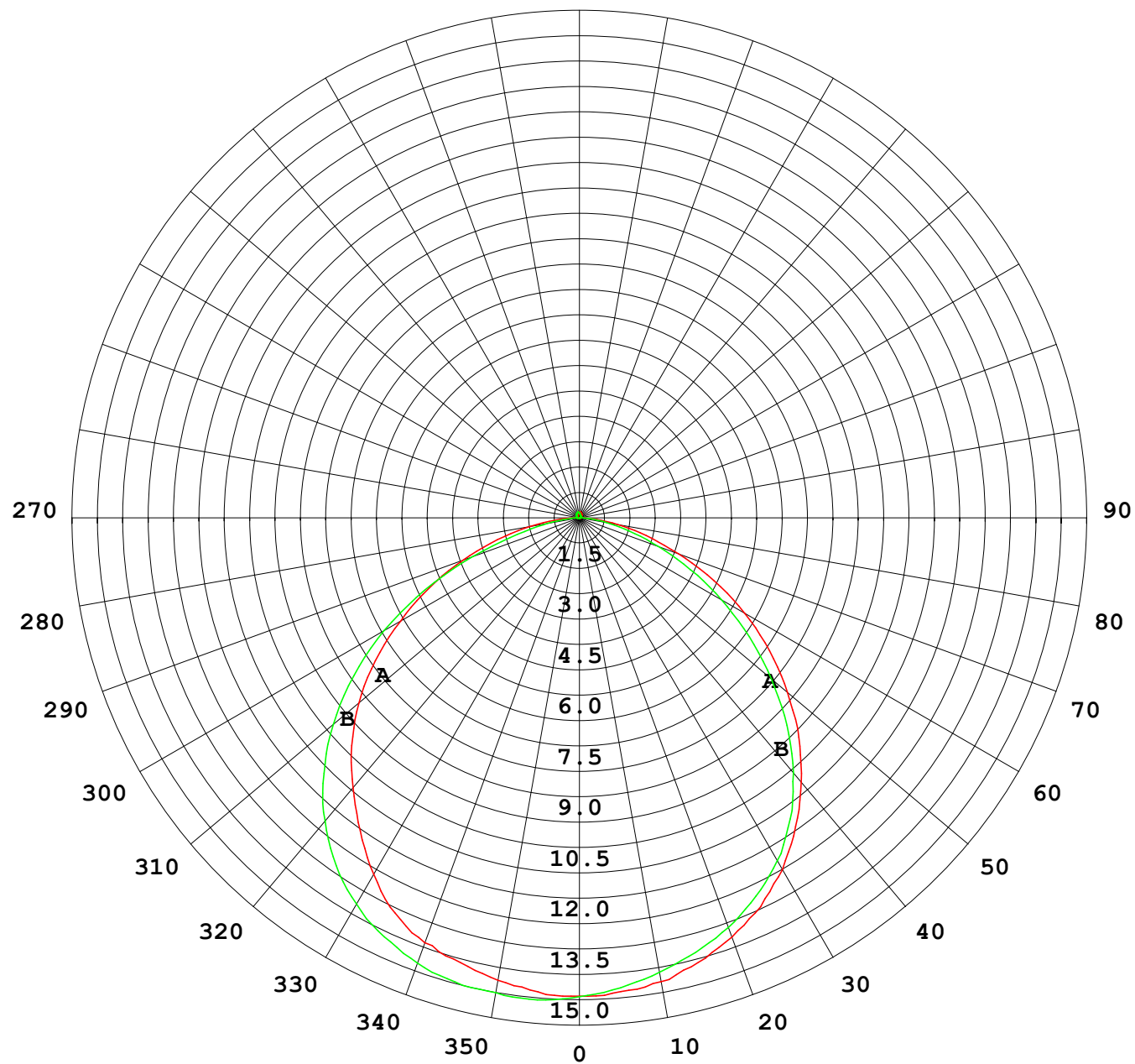
Photometric Data Table [cd]

33.0	11.25	11.39
36.0	10.80	10.82
39.0	10.28	10.26
42.0	9.701	9.705
45.0	9.056	9.123
48.0	8.343	8.500
51.0	7.560	7.870
54.0	6.771	7.212
57.0	5.946	6.540
60.0	5.164	5.819
63.0	4.416	5.120
66.0	3.682	4.400
69.0	3.038	3.686
72.0	2.394	3.001
75.0	1.833	2.322
78.0	1.314	1.719
81.0	0.8433	1.158
84.0	0.4419	0.6664
87.0	0.1514	0.2781
90.0	0	0.0697
93.0	0	0.0209
96.0	0	0.0069
99.0	0	0
102.0	0	0.0069
105.0	0	0.0069
108.0	0	0.0069
111.0	0	0.0069
114.0	0.0554	0.0069
117.0	0.0623	0.0069
120.0	0.0762	0.0069
123.0	0.0762	0.0069
126.0	0.0831	0.0551
129.0	0.0831	0.0831
132.0	0.0832	0.0831
135.0	0.1039	0.0831
138.0	0.1108	0.0831
141.0	0.1108	0.0831
144.0	0.1247	0.0831
147.0	0.1247	0.0831
150.0	0.1247	0.0831
153.0	0.1455	0.0900
156.0	0.1524	0.0900
159.0	0.1524	0.0900
162.0	0.1663	0.0969
165.0	0.1731	0.0970
168.0	0.1731	0.1109
171.0	0.1731	0.1177
174.0	0.1801	0.1177
177.0	0.1801	0.1524
180.0	0.1801	0.1731

C Range: 0 - 360DEG
 C Interval: 30.0DEG
 Test Speed: HIGH
 Temperature: 25.3DEG
 Operators: WFW
 Test Date: 2022-12-15

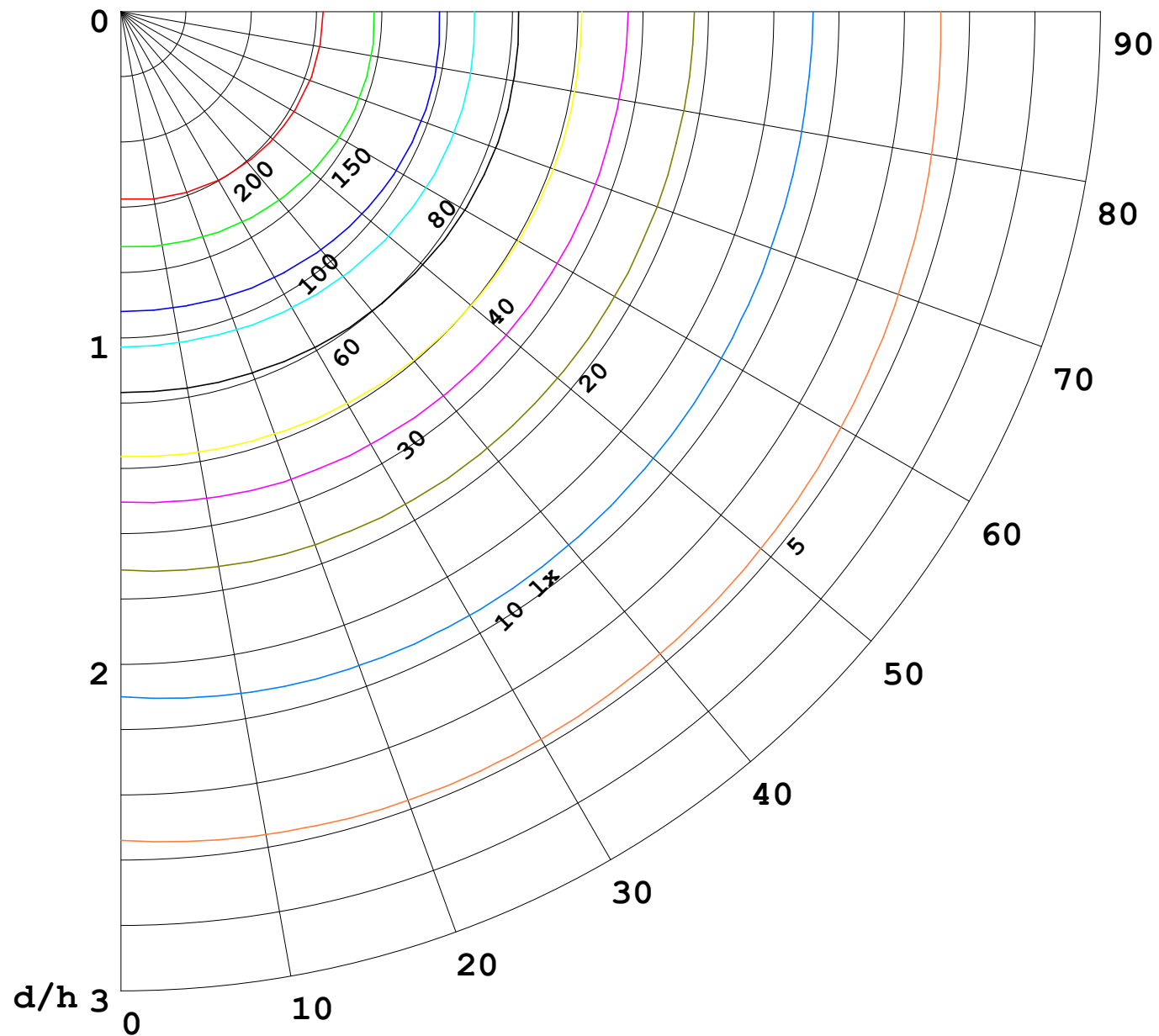
γ Range: 0 - 180DEG
 γ Interval: 1.0DEG
 Test System: EVERFINE GO-2000B_V1 SYSTEM V2.0.269
 Humidity: 65.0%
 Test Distance: 10.800m [K=1.0000]
 Remarks:

I (cd)



1000 lm

$\kappa = 1$



F = 5000 lm
 K = 0.7
 Hcc = 0.0 m
 Hfc = 0.0 m
 Eave = 100 lx

	Pcc	Pw	Pfc
—	70	50	30
—	50	30	20

